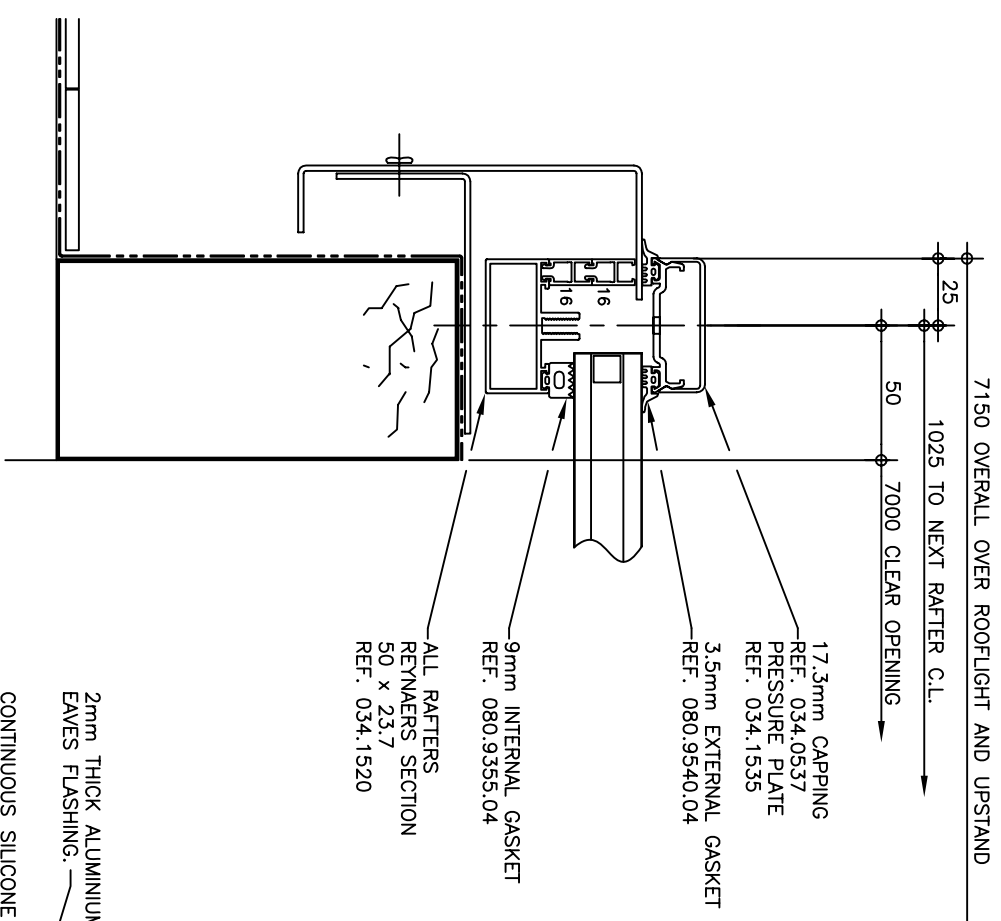


**PLAN ON ROOFLIGHT**  
(1No. REQUIRED AS SHOWN)

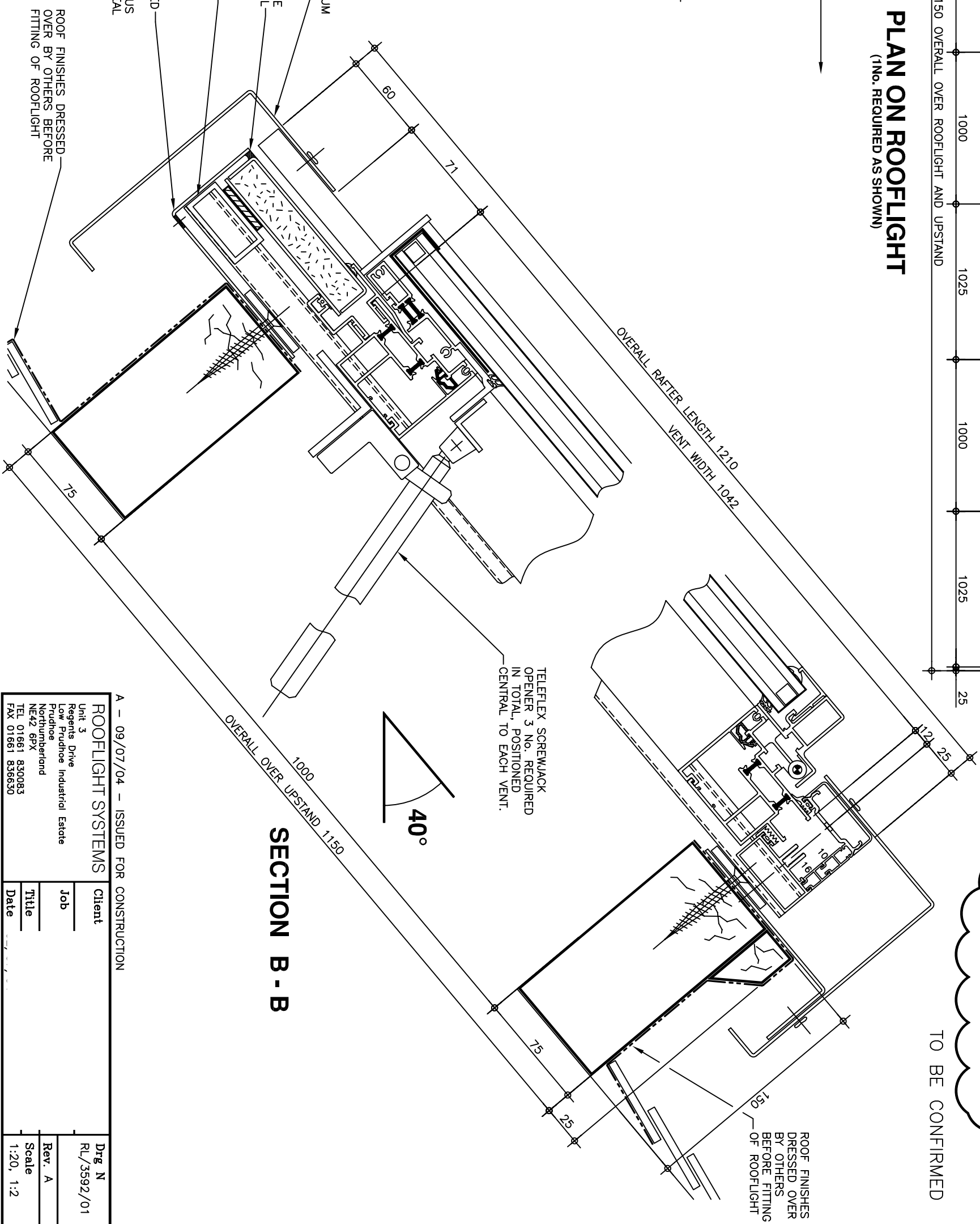
**GLAZING:-**  
OUTER - 7mm GEORGIAN WIRED CAST GLASS  
CORE - 12mm CAVITY  
INNER - 6.4mm CLEAR LAMINATED GLASS

**FINISHES:-**  
ALL VISIBLE ALUMINIUM POLYESTER  
POWDER COATED:-  
COLOUR - XXXXXXXXXXXXXXXX  
RAL - XXXXXXXXXXXXXXXX

TO BE CONFIRMED



**SECTION A - A**



**SECTION B - B**

TELEFLEX SCREWJACK  
OPENER 3 No. REQUIRED  
IN TOTAL, POSITIONED  
CENTRAL TO EACH VENT.

ROOF FINISHES  
DRESSED OVER  
BY OTHERS  
BEFORE FITTING  
OF ROOFLIGHT

A - 09/07/04 - ISSUED FOR CONSTRUCTION		Client	Regents Drive Low Prudhoe Industrial Estate Northumberland NE42 6PX TEL 01661 830083 FAX 01661 836630	Unit 3	Drng N RL/3592/01
ROOFLIGHT SYSTEMS		Job			Rev. A
		Title			Scale
		Date			1:20, 1:2